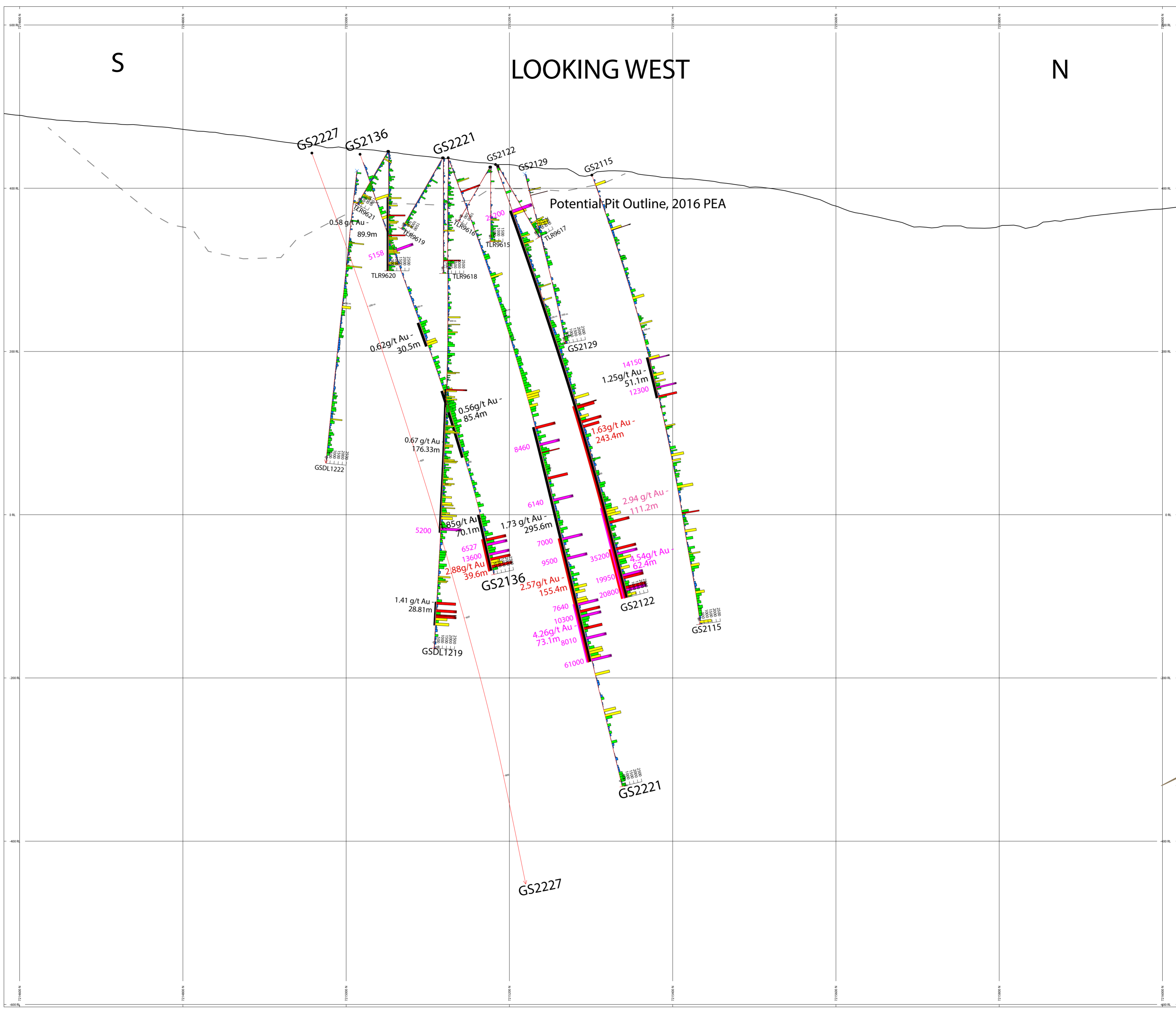


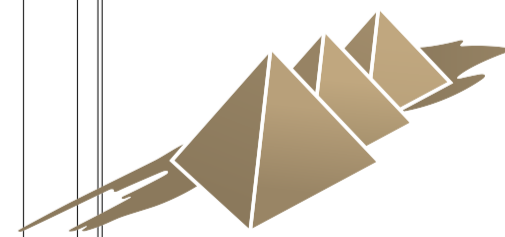
S

LOOKING WEST

N



478850E



GOLDEN SUMMIT

TOPOGRAPHY
 Au_ppb COL_RANGE Min 0 Max 2500
 BAR GRAPHS
 5000
 2000
 1000
 300

SECTION SPECS:
 REF P.T.E. N 478850 W 215300 m
 EXTENTS 1439 m 1226 m
 SECTION TOP: BOT 622.6 m -603.1 m
 TOLERANCE +/- 25 m

SCALE 1:1500
 (m)
 -20 0 20 40 60
 NAD27 / UTM zone 6N
 478850E SECTION

AZIMUTH = 0°
 N
 W - E
 S